



focus

focus is a simple-to-use graphical test and measurement tool that provides a broad range of specialised applications tailored to meet specific LTE testing needs. The simplicity and specialised product scope of **focus** make it ideal for the test engineer user. The library of applications provides scalability throughout the R&D lifecycle, from early Layer 1 testing through to application development.

*The simplicity and specialised product scope of **focus** make it ideal for the test engineer user.*

focus offers a significant value proposition:

- A stable solution that provides full Cat 3 data rate in a graphical environment
- It is flexible enough to add new test capability as required
- Specialised applications optimised to address specific test areas including LTE throughput, dynamic configurations for Layer 2 control, and LTE Layer 1 test.

The benefits of using **focus**

- **Simplicity and specialised product scope makes it ideal for the test engineer user**
Each **focus** application is designed for a particular specialised test purpose. This means that users can perform testing using protocol concepts and test methodologies that they are readily familiar with and that are most appropriate for their type of testing.
- **Scalable for use throughout the R&D lifecycle**
Anite's innovative approach to providing test solutions centred on meeting your needs means that you can focus your investment on test applications that provide the correct level of functionality. The library of **focus** applications allows the flexibility to scale your test capability as, and when, you need it.
- **Uses Anite's flexible network licensing and proven Anite 9000 platform**
focus provides an enterprise with the flexibility to share **focus** applications across many different test systems, reducing the overall level of capital investment required.
- **Industry standard SCPI automation interface**
Improve system utilisation, or create complex sequences of tests that can run autonomously, through an automation interface that provides the industry-standard Standard Commands for Programmable Instruments (SCPI) support.

Anite facts

- Global leader in wireless testing solutions for twenty years
- Over 200 customers in 85 countries
- With offices and staff in 13 countries across Europe, America, Asia and the Middle East, we're always on the ground where you need us
- We invest heavily in R&D to maintain our leading position in wireless mobile device testing
- Trusted partner of the Top Ten mobile manufacturers and Tier One mobile network operators globally.

KEY focus FEATURES

focus supports the following leading edge LTE functionality:

FDD LTE and TD-LTE support

Full 3GPP LTE spectrum frequency band support

End-to-end IPv4/IPv6 data and throughput test

Comprehensive protocol logging and offline analysis tools

Full 3GPP-compliant protocol stack provides automatic network simulation

Functional testing

Intuitive, easy-to-use graphical user interface

Powerful RF, PHY and protocol real-time analysis views

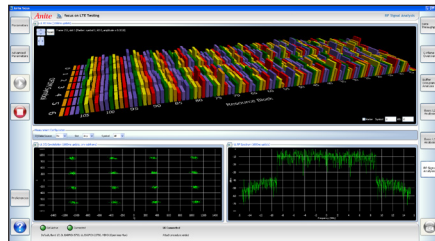


Figure 1: **focus** – RF Signal Analysis View

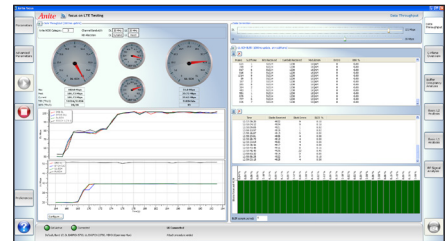


Figure 2: **focus** – Data Throughput View

Anite Testing Equipment

All wireless device testing solutions need a platform that provides the radio access network simulation necessary to test real-world devices. Anite's approach is to utilise highly innovative software to provide a feature rich platform environment that is tailored to the requirements of a particular test scenario. The underlying hardware provides the necessary physical and RF capability to link the test solutions to the device being tested.

Both hardware and software of the Anite platform are genuinely common across all Anite's products. This consistency offers a confidence that the capability of the platform is tried and tested. It also reduces the risk that might otherwise be introduced to your R&D programme if different test solutions are used at different stages of the development lifecycle. You can also rest assured that you can re-use your investments in other parts of the R&D lifecycle, or even in other Anite product solutions.

Contact the team

talk +44 (0)1252 775 200

read www.anite.com/wireless

write wireless@anite.com

Anite Telecoms Ltd Ancells Business Park
Harvest Crescent Fleet Hampshire GU51 2UZ UK